

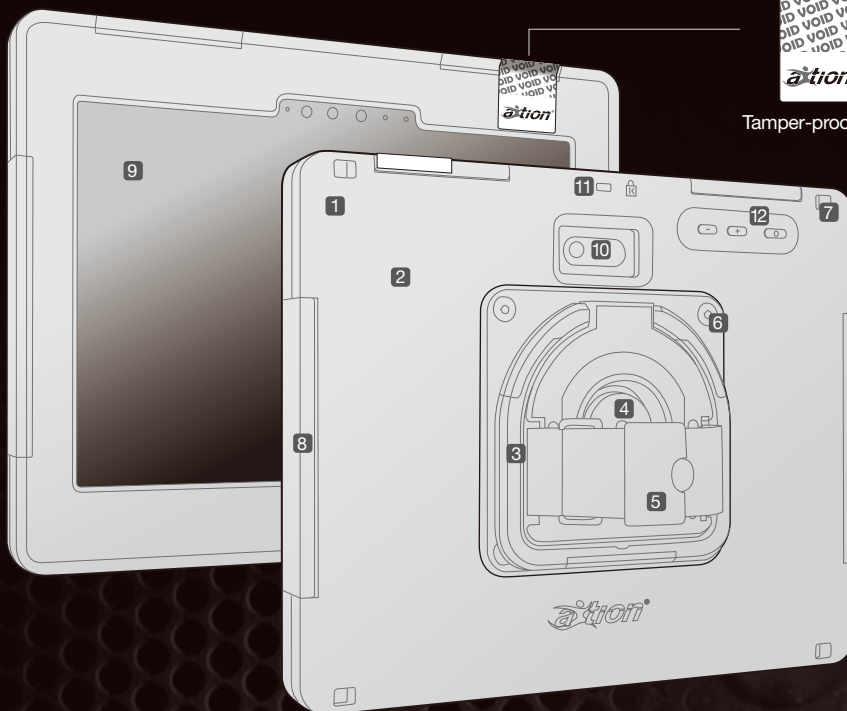
action® extreme MP

User Guide

Warning instructions include both English and French
Les instructions de sécurité en anglais et français



Tamper-proof Label



1. Reinforced corners
2. Robust outer shell provides hazardous location protection
3. Rotating, multi-angle and anti-slip kickstand and carrying handle
4. MagConnect adapter for compatibility with all MagConnect Mounts
5. Adjustable silicone hand strap - easy to clean
6. VESA 100 Compatible (Outside of hazardous location zones)
7. Universal Shoulder Strap port
8. Charging port cover
9. Built-in heavy-duty 9H PET screen protector
10. Front and rear facing camera lens covers
11. Security lock port
12. Molded-In Buttons



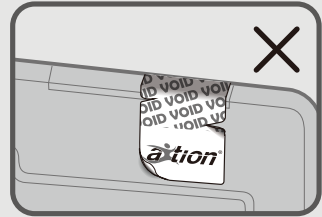
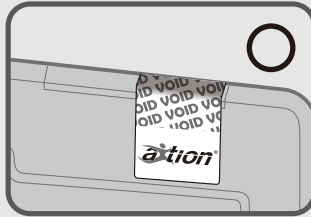
Inspections before entering the hazardous environment:

- Label:** Check the certification label to ensure the case is certified for your work environment, and the tamper-proof label is not missing or shows signs of tampering.
- Case Body:** Inspect the case and ensure there is no damage such as cracks, or missing parts.
- Screen Protector and Camera Lens Cover:** Ensure the screen and lens cover have no cracks and is firmly adhered to the case.
- Port Cover:** Ensure all port covers are completely closed.

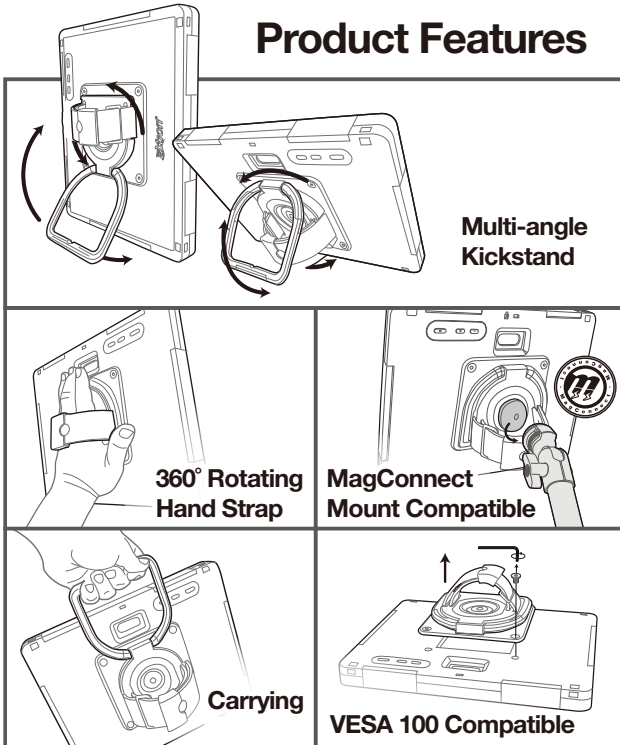
Label Inspection

This hazardous location certified solution is void if the tamperproof label is broken or appears tampered.

Due to the nature of hazardous locations this case and tablet solution will be utilized in, its imperative to ensure the install tamper-proof label is fully intact and shows no signs of tampering. If at any time the tamper-proof label is missing or appears to be tampered, whether it is during initial deployment or during regular usage, place the case out of service and contact your reseller. Each case solution should come with two standard labels. The first label details the certification of the case and appears on the backside of the case. The second is the tamper-proof label which is placed on the outer shell of the solution where the two outer shell pieces meet.



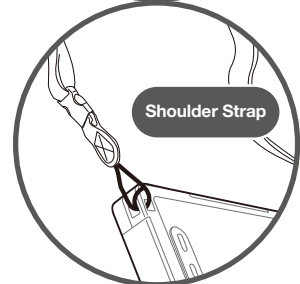
Product Features



Accessories

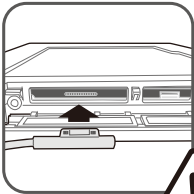
Sun Visor | Harness & Shoulder Strap

Harness secures the case for safe transport and provides coverage from sun glare.



FAQs

How does the user charge the device?

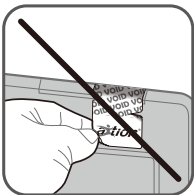


This case and tablet solution cannot be charged anywhere in a hazardous environment. When in a safe environment free from explosive vapors, particles and debris the device can be charged by opening the Charging Port Cover on the case.



**Beware
Hazardous Area**

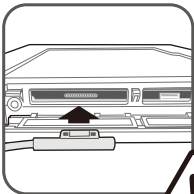
Can I open the protective case to remove the device for servicing purposes?



Absolutely not. Attempting to open the case or tampering with the labels and/or screws can void both the warranty and certification of the case. For any servicing needs, please contact our authorized service center to ensure your device remains in compliance with all safety and performance standards.

FAQs

Comment l'utilisateur peut-il recharger l'appareil?

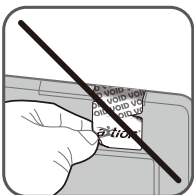


Cette solution comportant une tablette dans un boîtier ne doit jamais être rechargée dans un environnement dangereux. L'appareil peut être rechargé dans un environnement sécuritaire où il n'y a pas de vapeurs explosives, de particules et de tisons en soulevant la bande recouvrant la prise de recharge du boîtier.



**Mise en garde pour les
zones dangereuses**

Puis-je ouvrir le boîtier de protection pour retirer l'appareil à des fins de réparation?



Jamais. Toute tentative d'ouvrir le boîtier ou d'enlever les étiquettes ou les vis peut annuler la garantie et la certification du boîtier. Pour toute réparation requise, communiquer avec notre centre de service agréé afin de conserver la conformité de l'appareil aux normes de sécurité et de fonctionnement.

What do I do if I need technical support?

The aXtion Extreme case is covered under a one-year manufacturing warranty. The tablet is covered by the tablet manufacturer's warranty. Contact tablet manufacture for tablet technical support or warranty service. Contact The Joy Factory for case technical support and warranty service, or reinstallation of the case if a tablet replacement or repair is needed.



Cleaning Instructions

To safely clean the case and tablet solution use a cleaning cloth from the below list of approved cleaners. Should one of these cleaning solutions not be available a damp cloth may be used. HAZARD: Never use a dry cloth to clean or wipe the case as this would cause a hazard by producing static electricity.

Approved Cleaners:

- Sani-Cloth® AF3
- Super Sani-Cloth®
- CaviWipes™
- Clorox Healthcare® Bleach Germicidal Wipes
- Oxivir® Tb

Que dois-je faire si j'ai besoin d'une assistance technique?

Le boîtier aXtion Extreme est couvert par une garantie de fabrication d'un an. La tablette est couverte par la garantie de son fabricant. Communiquer avec le fabricant de la tablette pour obtenir de l'assistance technique ou un service couvert par la garantie. Communiquer avec The Joy Factory pour obtenir une assistance technique et un service de réparation couvert par la garantie du boîtier, ou pour la réinstallation du boîtier lorsqu'un remplacement ou une réparation d'une tablette est nécessaire.



Instructions de nettoyage

Pour nettoyer l'ensemble de boîtier et tablette en toute sécurité, il faut se servir d'un linge de nettoyage figurant sur la liste des nettoyeurs approuvés. Au cas où ces solutions de nettoyage ne sont pas offertes dans votre région, un chiffon humecté peut être employé.

DANGER : Ne jamais employer un chiffon sec pour nettoyer ou essuyer le boîtier, car ceci risquerait de générer de l'électricité statique.

Nettoyants approuvés :

- Sani-Cloth® AF3
- Super Sani-Cloth®
- CaviWipes™
- Lingettes germicides imbibées de javel Clorox Healthcare®
- Oxivir® Tb

This case is certified and deemed safe to be used in potentially hazardous environments. Please refer to the certification label on the case or product page on The Joy Factory's website www.thejoyfactory.com for the certification information.





This Disclaimer applies to The Joy Factory Inc.'s aXtion® Extreme Cases (the “Case” or the “aXtion Extreme Case”).

INSTRUCTIONS

PLEASE READ ALL INSTRUCTIONS CAREFULLY. IMPROPER USE OF THE CASE COULD BE DETRIMENTAL.

This aXtion Extreme Case is designed only for the specific tablet listed on the box containing the Case. Thus, the Case is only intended for and only warranted for proper use with that specific tablet and not for use with another device type. Because different generations of tablets have different specifications, please refer to the packaging for your aXtion Extreme Case to determine whether your tablet will be compatible with the aXtion Extreme Case you have purchased.

Do not use the aXtion Extreme Case if it is damaged or not functioning properly for any reason.

CERTIFICATIONS

aXtion Extreme Cases are approved for usage in hazardous locations. Please refer to the certification label on the case and/or the product page on The Joy Factory website for the specific certifications. The certified Case and tablet solution is installed in The Joy Factory Inc's certified labs and is verified with a tamper-proof label. If the tamper-proof label is removed then the solution is void. The Case's label should be inspected upon deployment and periodically while in-use. When the tamper-proof label is intact, the Case provides protection to tablets in environments where explosion or fire hazards exist due to the presence of flammable gases, flammable or combustible liquid-produced vapors, combustible dusts, or ignitable fibers or flying materials.

All aXtion Extreme Cases are certified IP68 waterproof. The IP68 rating means that the aXtion Extreme Case is certified as “dust and watertight” (that is, no dust or water will enter the Case when it is properly installed and used). All aXtion Extreme Cases are also designed to be shock resistant and can physically and functionally withstand infrequent, non-repetitive shocks encountered in various environments.

NO ALTERATIONS

Any alteration to your aXtion Extreme case is prohibited and will not be covered under any of the certifications/compliance. In addition, any alterations will void all warranties, for the Case. The Joy Factory Inc. disclaims any and all liability for damages arising from use of an altered aXtion Extreme case.

NOTE: Removal of the device from the aXtion Extreme Case breaks the tamper-proof label thus voiding all certifications. The Joy Factory Inc. disclaims all liability and all warranties, whether expressed or implied, in situations where the Case is mishandled.

EXPRESS WARRANTY

The Case is covered under a one-year manufacturing warranty from the date of purchase and can be replaced free of charge for any manufacturing defects. If you believe the Case has a manufacturing defect, cease use immediately and contact The Joy Factory Inc. by email at support@thejoyfactory.com or by telephone at (949) 216-8888, Monday through Friday, 9:00 a.m. to 5:00 p.m., Pacific Standard Time. The Joy Factory Inc. will only replace a Case that has a manufacturing defect. The Joy Factory is not liable to replace or pay for replacement of your device or any additional items which may be damaged from use of a Case with manufacturing defects or the use of the Case with other cases and bumpers.

WARRANTY DISCLAIMER

EXCEPT TO THE EXTENT SET FORTH IN THE EXPRESS WARRANTY ABOVE AND AS PERMITTED BY LAW, THE JOY FACTORY INC. PROVIDES THE CASES ON AN “AS IS” BASIS, AND DISCLAIMS ALL WARRANTIES AND CONDITIONS WITH RESPECT TO THE CASES, WHETHER ORAL, WRITTEN, STATUTORY, OR IMPLIED, INCLUDING THE IMPLIED WARRANTIES OF MERCHANTABILITY, FITNESS FOR A PARTICULAR PURPOSE, TITLE, AND NON-INFRINGEMENT OF THIRD-PARTY RIGHTS.

The Joy Factory Inc. does not provide a warranty for the tablet computer installed into the aXtion Extreme Case.

LIMITATION OF LIABILITY

IN ADDITION TO THE ABOVE WARRANTY DISCLAIMER, TO THE MAXIMUM EXTENT PERMITTED BY LAW, IN NO EVENT WILL: (A) THE JOY FACTORY, INC., ITS PARTNERS, OFFICERS, DIRECTORS, AGENTS, EMPLOYEES, AFFILIATES, PARENTS, SUCCESSORS, ASSIGNS, LICENSORS, SUPPLIERS, AND RESELLERS (COLLECTIVELY, “THE JOY FACTORY PARTIES”) BE LIABLE FOR ANY CONSEQUENTIAL, EXEMPLARY, SPECIAL, OR INCIDENTAL DAMAGES, INCLUDING ANY DAMAGES FOR PERSONAL INJURY OR LOST DATA, PROFITS, EQUIPMENT OR PROPERTY, ARISING FROM OR RELATING TO THE CASES, EVEN IF THE JOY FACTORY PARTIES KNEW OF, SHOULD HAVE KNOWN OF, OR WERE ADVISED OF THE POSSIBILITY OF SUCH DAMAGES; AND (B) THE TOTAL CUMULATIVE LIABILITY OF THE JOY FACTORY PARTIES ARISING FROM OR RELATED TO THE CASES, WHETHER IN CONTRACT, TORT OR OTHERWISE, EXCEED THE AMOUNT OF \$100.00. THIS LIMITATION APPLIES NO MATTER HOW MANY CASES YOU OWN, AND WILL NOT BE INCREASED BY THE EXISTENCE OF MORE THAN ONE INCIDENT OR CLAIM.

CALIFORNIA PROPOSITION 65 NOTICE

The State of California requires that all manufacturers notify their consumers of certain chemicals that may be found in their products, even if the amount is very slight. This is so because, if ingested, exposure to these chemicals could contribute to higher risks of cancer or birth defects. The general Proposition 65 notice is as follows:

WARNING: This product contains a chemical known to the State of California to cause cancer, birth defects or other reproductive harm.

All of The Joy Factory Inc.'s Cases are safe and are required to meet applicable federal health and safety standards. A variety of products on the market today contain safe levels of these chemicals, and when used as intended, do not expose the consumer to any greater risks.

For more information on California's Proposition 65, please see: <https://oehha.ca.gov/proposition-65/law/proposition-65-law-and-regulations>

Contact us: support@thejoyfactory.com
(949) 216-8888
Monday through Friday,
9:00 a.m. to 5:00 p.m. (PST)